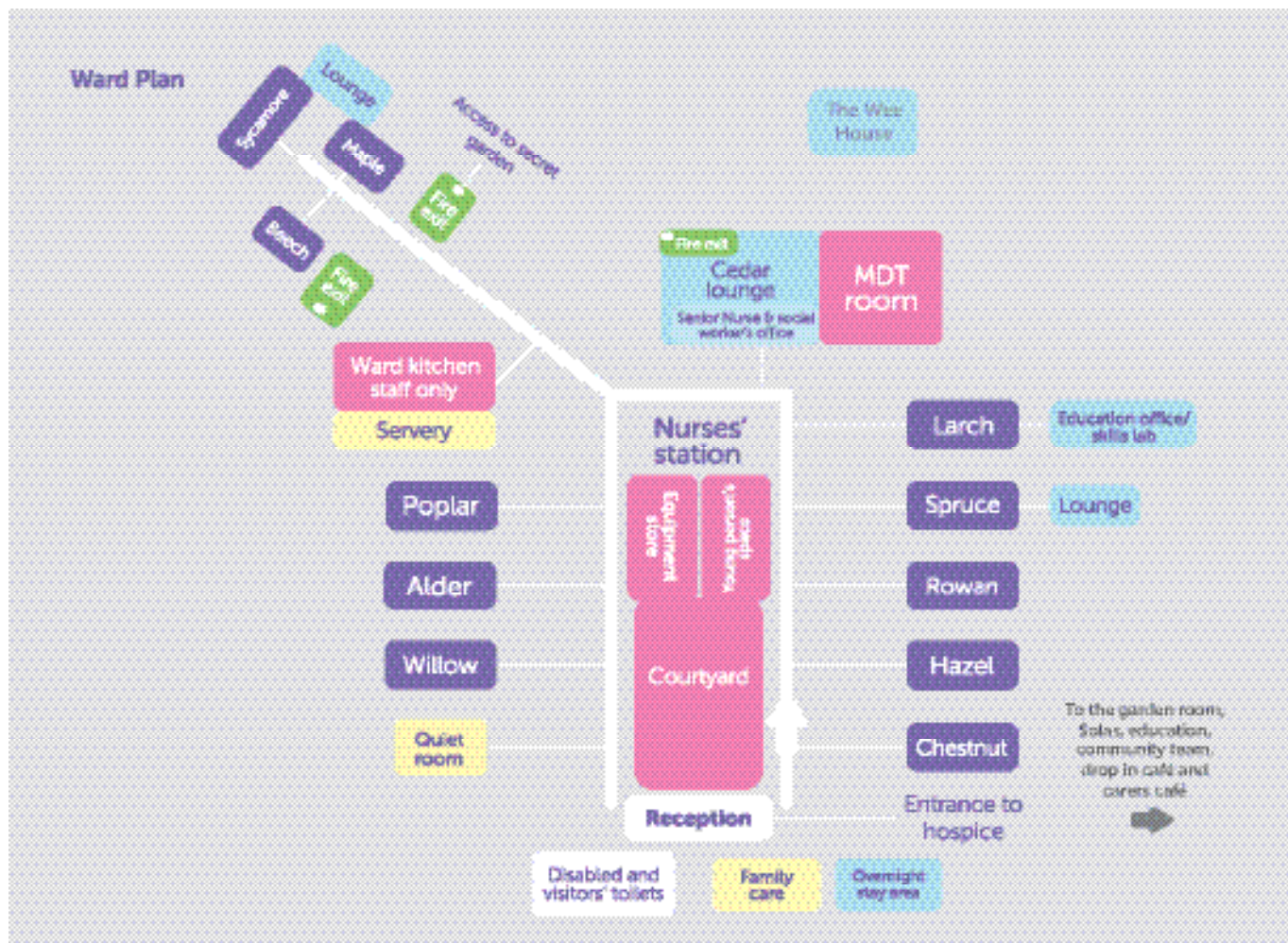


## Hospitality information for in-patient visitors



### How to get here

Centrally located on Racecourse Road in Ayr the hospice is in easy reach of both Ayr bus station and Ayr railway station.

The A9 bus runs directly past the Ayrshire Hospice following the route of: Burton - Doonfoot - Ayr.

Taxis are available outside the Ayr Railway Station. Alternatively you can call Ayr Black Taxi Ltd on 01292 284545 / 471600.

### The Ayrshire Hospice

35 Racecourse Road, Ayr, Ayrshire KA7 2TG  
t: 01292 269200 f: 01292 294402  
e: [enquiries@ayrshirehospice.org](mailto:enquiries@ayrshirehospice.org)  
[www.ayrshirehospice.org](http://www.ayrshirehospice.org)



This leaflet is available in audio format. Large print and translations are available on request.



Ayrshire  
Hospice

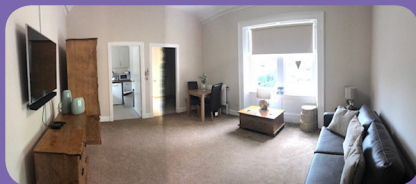
A University Hospice:  
working together to advance excellence

Scottish Charity Number (SC011390)  
Last reviewed: September 2019

## Accommodation

There are various accommodation options available to relatives and carers during a patient's stay. These include:

- Sleeping alongside the patient either in a recliner chair, a fold-away bed or a cuddle bed (subject to availability)
- Our family rooms which are situated within the main in-patient building and have facilities including sofa beds, kitchen facilities and shower room with WC
- Sitting rooms which are situated off of some patient rooms
- The "Wee House" which is situated within the hospice garden. This consists of a sitting room, bedroom, kitchen and shower room with WC. Kitchen facilities are available in the "Wee House" should you wish to make your own meals.
- There are also many local hotels nearby, please ask staff for assistance with contact numbers.



## Accommodation cont.

All of our accommodation facilities are allocated on a daily basis, depending on requirements. They are all non-smoking areas.

If you are planning to stay overnight please bring any personal items that you may require. If you need access to wifi, please just ask a member of the team for the code.

Health and safety procedures will be explained to you at time of allocation. Please note however, that in the event of the fire alarm sounding in the "Wee House" you should evacuate to the main hospice building.

## Meals

We understand that there may be times when you don't want to leave the in-patient unit. When possible, the catering staff will try their very best to accommodate you. However, please note that these facilities are limited and there may be a small charge for meals. A continental breakfast, lunch and evening meal may be provided. Please ask the nursing team for assistance.

In the hospice lounge area there is a tea/coffee machine, fridge, microwave and vending machine which are also available for your use.



We are also happy for you to order meals from a local take away, many of which offer delivery.

## Visiting



The hospice has open visiting times, allowing families to spend as much time together as they wish.

Please do bear in mind that large numbers of visitors can be tiring for some patients. Visiting is at the discretion of patients, staff and relatives.

Due to fire and security reasons, staff need to be aware of who is in the building. You are therefore required to sign in and out at reception.

If assistance is required with public transport timetables, please ask a member of staff.

